


1 Purpose	To outline the requirements for winter footwear traction devices.
2 Application	Applies to all NTPC employees and contractors who walk on packed snow and ice.
3 Definitions	<ul style="list-style-type: none"> • Nil
4 References	<ul style="list-style-type: none"> • Health & Safety Management System Element 06: Personal Protective Equipment • SWP 4.01: Personal Protective Equipment
5 Equipment	<ul style="list-style-type: none"> • Nil
6 PPE	<ul style="list-style-type: none"> • Winter footwear traction devices
7 Training	<ul style="list-style-type: none"> • NTPC Personal Protective Equipment
8 Work Practice	<p>Introduction</p> <p>Winter slip and fall incidents are a major cause of workplace injuries. One way to improve traction while walking in slippery winter conditions is to use winter footwear traction devices (see Figure 1). Although they are designed to provide greater traction on packed snow and ice, these devices will not eliminate the risk of slipping. Always exercise caution when walking, running, or working on packed snow and ice.</p> <p style="text-align: center;">Figure 1: Winter Footwear Traction Devices</p>  <p>General Guidelines</p> <ul style="list-style-type: none"> • Employees shall requisition winter footwear traction devices through their manager, selecting only items listed on <i>Form 6.2: Approved HSE Equipment Purchasing List</i>. NTPC provides YakTrax brand devices. • Winter footwear traction devices come in a variety of sizes and are designed to slip on and off over regular winter

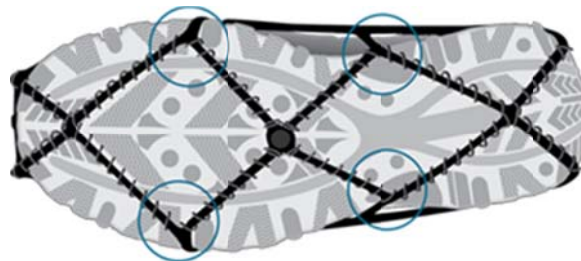
footwear.

- To put a winter footwear traction device on, sit down and slip it on over the shoe/boot. Start at the front, pull over the bottom of the shoe/boot, and secure behind the heel.
- Walk normally when wearing these devices – special walking methods are not required.
- Approved winter footwear traction devices shall be worn when working outside for extended periods of time in slippery winter conditions (i.e., packed snow and ice).
- Winter footwear traction devices are not required when outside for short durations (e.g., short walk from car to office or between buildings).
- Winter footwear traction devices shall not be worn where they will present a slipping hazard:
 - Indoors.
 - On metal grating (e.g., stairs, walkways).
 - On smooth outdoor non-snow/ice surfaces (e.g., pavement, concrete, wood, metal).
 - On black ice.
- All employees, whether they normally work outside or not, are encouraged to get NTPC-issued winter footwear traction devices and use them when walking outside: to and from work, at work, while on break, and on personal time.

Care and Maintenance

- Keep winter footwear traction devices clean using mild soap and water, and store away from direct sunlight.
- To ensure maximum life and effectiveness of the devices, periodically pinch the coils in the areas indicated by the circles in Figure 2 to maintain original shape and angle.

Figure 2: Coil Maintenance



9 Documentation

- Nil



Safe Work Practice:
Winter Footwear Traction Devices

Page 3 of 3

Monitor:
Director, Transmission & Distribution

SWP #:
4.11

Development

Name	Position	Date
Prepared by: E. Smith	Director, Health, Safety & Environment	Jul. 22, 2016
Reviewed by: A. Crowther	Health & Safety Coordinator	Jul. 22, 2016
Approved by: E. Smith	Director, Health, Safety & Environment	Jul. 22, 2016

Revision History

#	Revised Sections	Description of Revisions	Revised by (name, position)	Approved by (name, position)	Issue Date
01					
02					
03					
04					
05					
06					
07					