


# Gameti Emergency Response Plan



 <p><b>NORTHWEST TERRITORIES POWER CORPORATION</b> <i>Empowering Communities</i></p>	<p><b>Health &amp; Safety Management System Form:</b> Gameti Emergency Response Plan</p>	Page 1 of 20
	<p><b>Monitor:</b> Director, Health, Safety &amp; Environment</p>	Form #: 11.2

## Table of Contents

1	SITE DETAILS .....	3
1.1	COMMUNITY INFORMATION .....	3
1.2	SITE DESCRIPTION .....	3
2	EMERGENCY CONTACT LIST .....	5
2.1	LIST OF NTPC PERSONNEL & CONTACTS .....	5
2.2	LIST OF LOCAL EMERGENCY CONTACTS .....	5
2.3	LIST OF THIRD PARTY CONTACTS .....	6
2.4	EMERGENCY NOTIFICATION PROCEDURES .....	6
3	LIST OF EQUIPMENT AVAILABLE FOR RESPONSE .....	6
4	SPILL RESPONSE .....	7
5	COMMUNICATION AND SITE ACCESS INFORMATION .....	7
5.1	COMMUNICATIONS .....	7
5.2	ACCESS BY ROAD .....	8
5.3	ACCESS BY AIR .....	8
6	MEDICAL EMERGENCIES .....	8
6.1	MEDICAL EMERGENCY .....	8
6.2	GUIDELINES FOR SUMMONING AN AMBULANCE .....	8
6.3	PROVIDING EMERGENCY FIRST AID ASSISTANCE .....	9
7	INJURY COMMUNICATION PROTOCOL .....	10
8	BUILDING EVACUATION .....	13
8.1	GENERAL EVACUATION PROCEDURES .....	13
8.2	MUSTER POINT .....	13
8.3	SITE WARDEN .....	13
9	FIRE EMERGENCIES .....	13
9.1	FIRE IN THE PLANT .....	13
9.2	USING A FIRE EXTINGUISHER .....	14
9.3	IF TRAPPED IN A ROOM .....	14
9.4	IF CAUGHT IN SMOKE .....	14
9.5	IF FORCED TO ADVANCE THROUGH FLAMES .....	14
10	FOREST FIRES .....	15
10.1	FOREST FIRES NEAR A PLANT SITE .....	15
11	EARTHQUAKE .....	16
11.1	WORKERS INSIDE A BUILDING .....	16
11.2	WORKERS OUTSIDE A BUILDING .....	16
12	SEVERE STORMS .....	16
13	FLOODS .....	16

	<b>Health &amp; Safety Management System Form:</b> Gameti Emergency Response Plan	Page 2 of 20
	<b>Monitor:</b> Director, Health, Safety & Environment	Form #: 11.2

14 BOMB THREATS AND SUSPICIOUS PARCELS ..... 17

    14.1 PERSON RECEIVING A BOMB THREAT BY PHONE ..... 17

    14.2 CHARACTERISTICS OF SUSPICIOUS PACKAGES AND ENVELOPES ..... 17

    14.3 PERSON FINDING A SUSPICIOUS PARCEL ..... 18

15 POWERLINE DOWN WHERE ACCESSIBLE ..... 18

	<b>Health &amp; Safety Management System Form:</b> Gameti Emergency Response Plan	Page 3 of 20
	<b>Monitor:</b> Director, Health, Safety & Environment	Form #: 11.2

# 1 Site Details

## 1.1 Community Information

Gameti (64<sup>0</sup> 09'N and 117<sup>0</sup> 20'W) is located 177 km northwest of Yellowknife on the southwest point of Gameti Island in Rae Lakes. The community has a population of 278 (2016 Census).

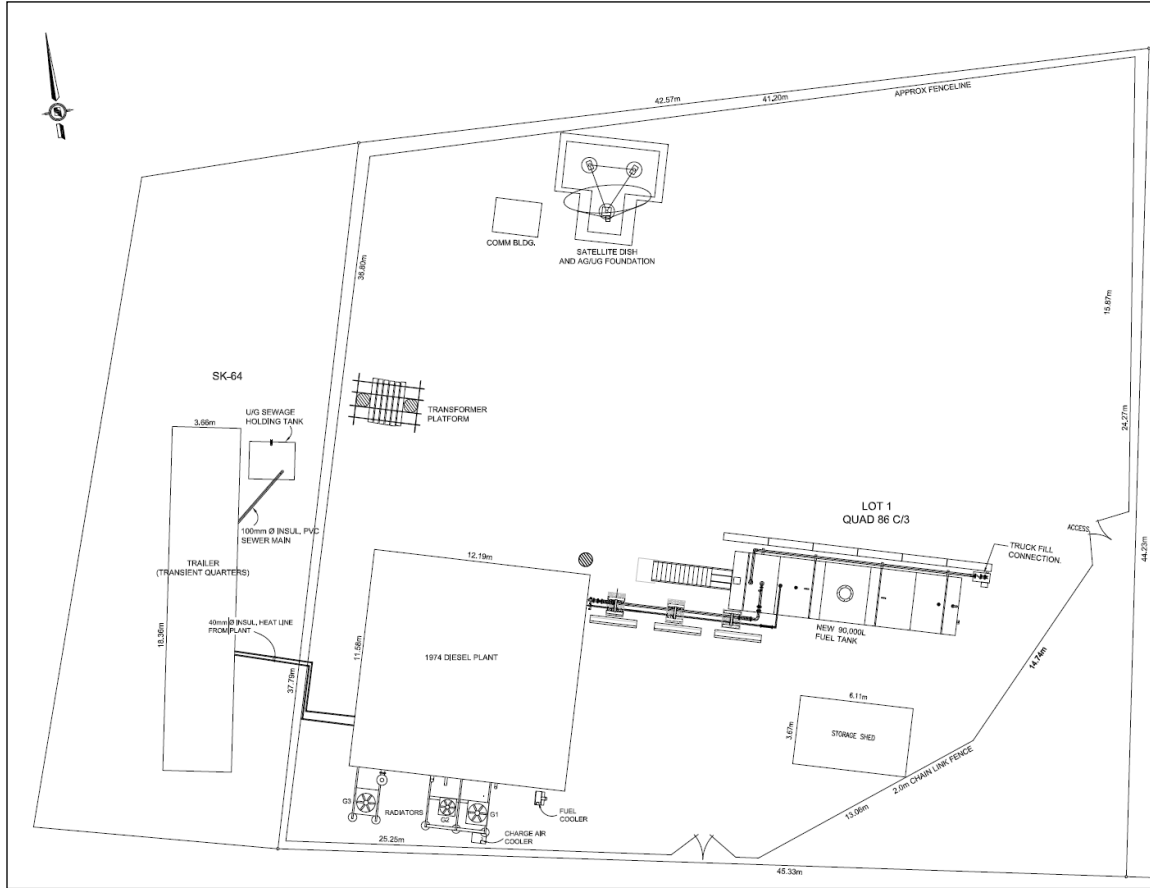
Gameti is accessible by air from Yellowknife year round. A winter road also links the community to Yellowknife.

## 1.2 Site Description

The Facility is located on the northeast end of Gameti and is surrounded with a chain-link fence. Access to the Facility is through a double gate on the south side of the property (see Figure 1.2.1).

The power plant sits in the southwest corner of the lot and contains three generating units. The crew trailer, which contains the office, sits west of the plant outside the fence. The warehouse sits in the southeast corner of the lot, and a wooden storage platform sits south of the warehouse next to the fence. One double-walled above-ground storage tank sits in the northeast corner of the lot. The SSI Micro satellite site sits in the northwest corner of the lot, and consists of a small building and a satellite dish. Pole storage is just outside the southeast fence. The PPD tank farm sits about 20 m southeast of the Facility.

**Figure 1.2.1 – Gameti Plant Site Diagram**



**Figure 1.2.2 – Gameti Plant**



## 2 Emergency Contact List

### 2.1 List of NTPC Personnel & Contacts

- A list of contact information for NTPC personnel to be used only in the event of an emergency is available on the NTPC Intranet (i.e. PowerLine) on the Health & Safety Management System page next to Element 11  
(<http://powerline.ntpc.com/file/1585/download?token=kBBI6kwn>)

### 2.2 List of Local Emergency Contacts

- The following parties may be of assistance in responding to an emergency.

Contact	Phone
<b>Emergency</b>	9-1-1
<b>NTPC System Control</b>	867-669-3370
<b>RCMP</b>	867-997-1111
<b>Fire Department</b>	867-997-2222
<b>Health Centre</b>	867-997-3141
<b>Community of Gameti</b>	867-997-3441
<b>WSCC</b>	1-800-661-0792
<b>24-Hour Spill Line</b>	867-920-8130
<b>ENR Fire Operations</b>	877-698-3473

<b>GNWT Emergency Measures Organization</b>	867-920-2303
<b>NorthwesTel</b>	867-920-3535

### 2.3 List of Third Party Contacts

- Additional heavy equipment is available within the Community of Gameti:
  - Community Government of Gameti - 867-997-3441

### 2.4 Emergency Notification Procedures

- When you call to request assistance from an emergency responder (e.g., RCMP, Fire Department, ambulance) remember to:
  - Stay calm.
  - Be prepared to answer the following questions:
    - What is your name?
    - Where is the emergency located?
    - What is the emergency (e.g., fire, medical, spill, etc.)?
    - Are there any injuries?
    - How did it happen?
    - When did it happen?
- Do not hang up until instructed to do so by the dispatcher.
- You do not need to know all the answers to these questions, but quickly gather as much information as you can.
- Provide a telephone number or safe location where the emergency responders can call or meet you, and wait for the responders at the safe location.

## 3 List of Equipment Available for Response

This facility maintains the following equipment available for use in emergencies.

<b>Equipment</b>	<b>Location</b>
<b>First aid kits</b>	1 located in the crew trailer 1 located in the plant 1 located in the plant vehicle
<b>Fire extinguishers</b>	3 located in the crew trailer 3 located in the plant 2 located next to the main fuel tank

	1 located in the plant vehicle
<b>AED</b>	1 located at the Health Centre
<b>Eyewash stations</b>	1 large station located in the plant
<b>Sorbents</b>	1 large spill kit located outside next to back door of plant 1 large spill kit located outside next to main fuel tank Additional sorbent material is located in the plant
<b>Shovels, vacuums, and other recovery equipment</b>	Shovels are located in the storage shed 1 vacuum located in the plant
<b>Salvage drums and other temporary containers</b>	Located in the storage area of the yard northeast of the plant
<b>Respirators</b>	Workers have their own personal respirators
<b>Personal protective equipment.</b>	Additional PPE (goggles, rubber gloves, tyvex suites, etc.) located in the plant locker

## 4 Spill Response

In the case of a spill of hazardous material refer to the Gameti Spill Response Plan. Hard copies are located at the plant and digital copies are located on the PowerLine.

(<http://powerline.ntpc.com/divisions/health-safety-environment/environment/spill-response-plans>)

## 5 Communication and Site Access Information

### 5.1 Communications

- Reliable communications are vital during an emergency response. Establish reliable communication between the Incident Commander and onsite responders as soon as possible.
- In the event of a communications outage (i.e., loss of NorthwesTel phone, cell, email service) the Plant Superintendent shall make every effort to contact their Manager as soon as it is safe to do so. Satellite phones in the community include:
  - Plant
  - RCMP
  - Hamlet
- Landline and cell phone communication is available from NorthwesTel. All major buildings (plant, crew trailer, etc.) have at least one phone.

## 5.2 Access by Road

- Ice road access from Highway 3 to Gameti is available from the middle of January to the middle of April.

## 5.3 Access by Air

- A 3000 ft gravel airstrip is located in Gameti. Charter and regular scheduled air services are available year round.

# 6 Medical Emergencies

## 6.1 Medical Emergency

- Ensure your own safety in the situation.
- Tend to the injured person(s) as required following first aid procedures.
- If required contact medical services to get an ambulance to attend.
- Assist the injured person to a medical centre/hospital for treatment by a doctor.
- Remain with the injured person(s) until medical aid arrives or you have reached a medical centre/hospital.

## 6.2 Guidelines for Summoning an Ambulance

- It is important to have a plan in place to call for an ambulance if one is required. Designate one person to be the main point of contact with emergency services.
- Gameti does not have a designated ambulance, however if transport to the Health Centre or airport for a medevac is required the Health Centre or RCMP will make the necessary arrangements.
- Call 867-997-3141 or 867-997-1111 to summon an ambulance in Gameti.
- The ambulance dispatcher will need to know:
  - it is a workplace accident
  - the complete company address (may need to include more specific directions or details)
  - site/contact telephone number
  - if first aid is attending, en route, or not available
  - description of the accident
  - number of casualties
  - are casualties conscious or unconscious
  - provide a brief description of the injuries
- It is also important to designate an individual to meet the ambulance at a predetermined location (same as given to ambulance dispatcher) to escort them to the accident area.

### **6.3 Providing Emergency First Aid Assistance**

The following instructions serve as a reminder for certified Workers providing emergency assistance.

#### **6.3.1 To Give Cardiopulmonary Resuscitation (CPR) (causality is not breathing and not responsive)**

- Check the person and the person's ABCs (Airway, Breathing, Circulation).
- If the person is unresponsive and not breathing normally, call EMS/9-1-1 and get an AED or have someone else do this. Place both of your hands on the centre of the person's chest.
- Do 30 chest compressions: Push deeply and steadily
- Open the airway by tilting the head back and lifting the chin.
- Place a barrier device over the person's mouth and nose, or place your mouth over the person's mouth and plug the person's nose.
- Give 2 breaths
- Repeat cycles of 30 chest compressions and 2 breaths.
- Continue CPR until an AED arrives, you are not able to safely perform CPR anymore, or more advanced care takes over.

#### **6.3.2 Abdominal Thrust for Choking Causality**

- If the person cannot speak, cough, or breathe or is making a high-pitched noise, immediately begin care for choking.
- Alternate between any two of the following methods until the object comes out: back blows, abdominal thrusts, and chest thrusts. Continue providing care until the object comes out or the person begins to breathe or cough. If the person becomes unresponsive, call EMS/9-1-1 and begin CPR, starting with chest compressions.
- **BACK BLOWS**
  - From behind, place one arm across the person's chest; and
  - Bend the person forward and deliver up to five (5) firm blows between the shoulder blades
- **ABDOMINAL THRUSTS**
  - From behind, place your fist just above the belly button.
  - Give up to five (5) quick, inward and upward thrusts
- **CHEST THRUSTS**
  - From behind, place your fist in the middle of the person's chest with your thumb facing inward and place your other hand over your fist.
  - Give up to five (5) chest thrusts by pulling straight back.

#### **6.3.3 To Stop Bleeding**

- Call medical assistance/ambulance
- Apply pressure directly onto the wound with a sterile gauze, clean handkerchief, or medical gloves
- Maintain a steady pressure

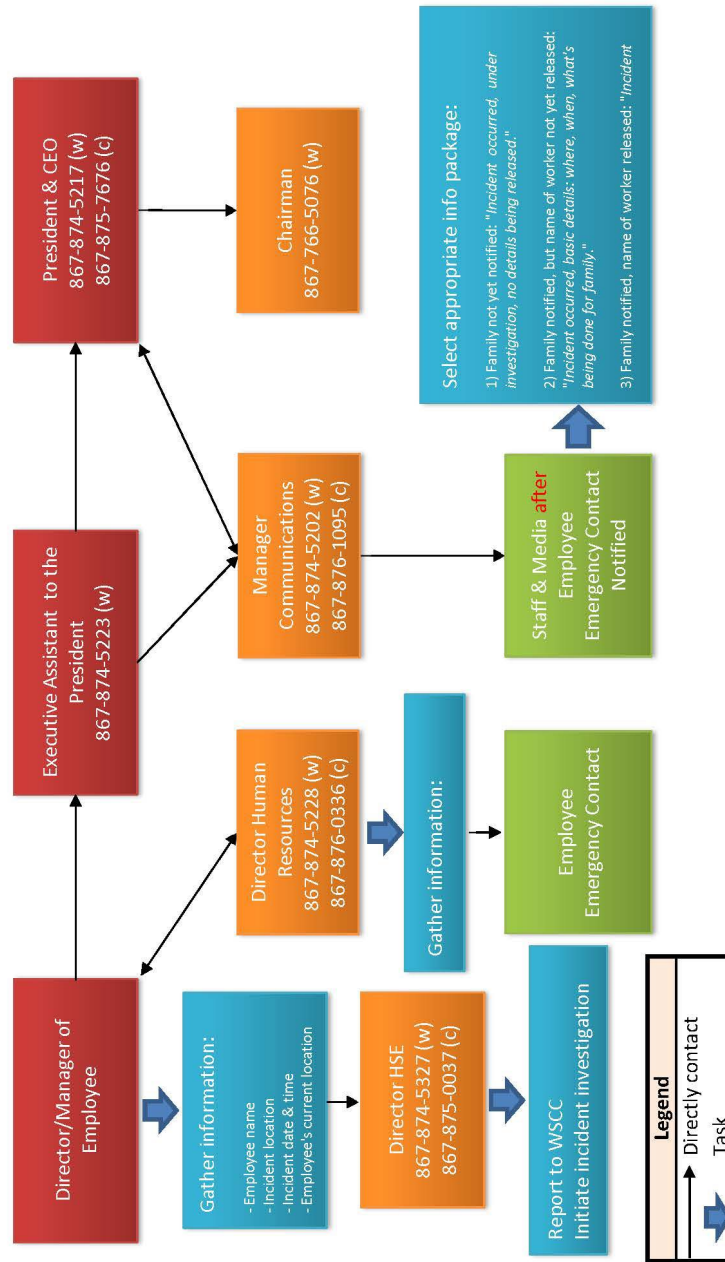
	<b>Health &amp; Safety Management System Form:</b> Gameti Emergency Response Plan	Page 10 of 20
	<b>Monitor:</b> Director, Health, Safety & Environment	Form #: 11.2

- If the casualty is bleeding from an arm or leg, elevate it
- Stay with the casualty until help arrives

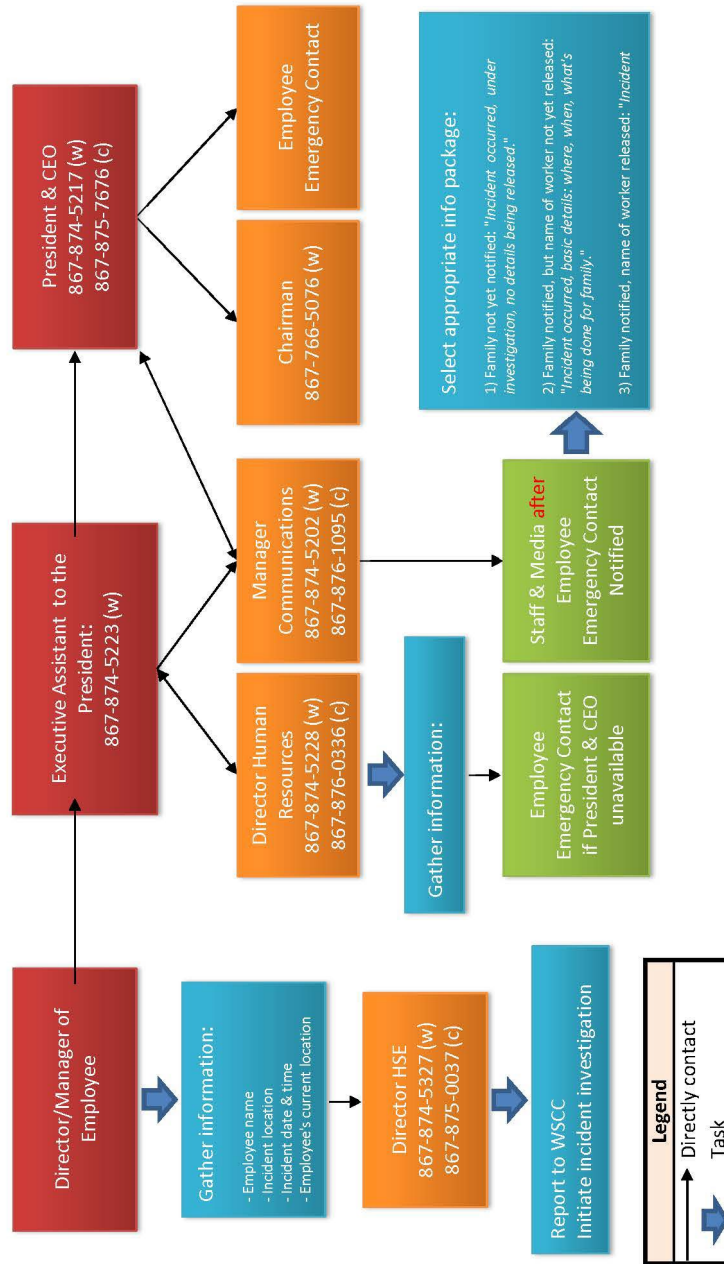
## **7 Injury Communication Protocol**

- Communication of information regarding emergencies shall be done as per section 5 and is the responsibility of either the emergency response authority (i.e., Manager, Director, or President; depending on the level of emergency) or the Communications Manager.
- In the event of a serious injury to an employee while on duty, the communication protocol shown in Figure 1 shall be followed.
- In the event of the death of an employee while on duty, the communication protocol shown in Figure 2 shall be followed.

**Figure 1: Communication Flowchart for Serious Injury of Employee while on Duty**



**Figure 2: Communication Flowchart for Death of Employee while on Duty**



## 8 Building Evacuation

### 8.1 General Evacuation Procedures

When evacuating your building or work area:

- Stay calm, do not rush, and do not panic.
- Safely stop your work.
- Gather your personal belongings if it is safe to do so. (Reminder: take prescription medications out with you if at all possible; it may be hours before you are allowed back in the site/building.)
- If safe, close your office door and window, but do not lock them.
- Use the nearest safe stairs and proceed to the nearest exit.
- Proceed to the designated Muster Point.
- Wait for any instructions from emergency responders.
- Do not re-enter the building or work area until you have been instructed to do so by the emergency responders.

### 8.2 Muster Point

The Muster Point is located next to the front door of the office on the west side of the property.

### 8.3 Site Warden

The Plant Superintendent is the Site Warden. Site Warden responsibilities include:

- In an emergency situation ensure the appropriate emergency services have been notified and brief emergency personnel on their arrival.
- During a site evacuation conduct a search of the site to ensure that all employees have left the site before leaving the site themselves.
- Assist people who require help evacuating the site.
- Confer at the Muster Point, maintain contact with emergency personnel, conduct an employee roll call and inform employees of the situation.
- Have first aid training.

## 9 Fire Emergencies

### 9.1 Fire in the Plant

- From a safe location contact the Fire Department to provide details of the situation.
- If you have been trained in the use of a portable fire extinguisher and are able to safely extinguish the fire, do so. Be sure you have a safe exit from the area and leave if one extinguisher does not put out the fire.
- If safe to do so close all fuel valves entering the plant building.
- Evacuate the building as soon as the alarm sounds or signs of an uncontrolled fire are noticed.
- On your way out, warn others nearby.

- Move away from fire and smoke. Close doors and windows if time permits and safe to do so.
- Touch closed doors before opening. Do not open them if they are hot.
- Use stairs only; do not use elevators.
- Move well away from the building and go to the designated Muster Point.
- Do not re-enter the building or work area until you have been instructed to do so by the emergency responders.
- For information on fire prevention refer to *SWP 1.04: Fire Prevention*.

### **9.2 Using a Fire Extinguisher**

- If you have been trained and it is safe to do so, you may fight small, contained fires with a fire extinguisher.
- Fire extinguisher instructions:
  - **P** Pull safety pin from handle.
  - **A** Aim at base of fire.
  - **S** Squeeze the trigger handle.
  - **S** Sweep from side to side at base of fire.
- For proper use of a fire extinguisher refer to *SWP 1.22: Fire Extinguishers*.

### **9.3 If Trapped in a Room**

- If possible wet and place cloth material around or under the door to prevent smoke from entering the room
- Close as many doors as possible between you and the fire
- Signal someone outside for help (e.g., phone, yelling, etc.)

### **9.4 If Caught in Smoke**

- Drop to hands and knees and crawl toward exit
- Stay low, as smoke will rise to ceiling level
- Hold your breath as much as possible
- Breathe shallowly through nose, and hold a shirt or towel over your mouth and nose to act as a filter

### **9.5 If Forced to Advance through Flames**

- Hold your breath
- Move quickly
- Cover your head and hair
- Keep your head down and your eyes closed as much as possible

## 10 Forest Fires

### 10.1 Forest Fires near a Plant Site

- A forest fire that threatens the Community of Gameti could result in damage to the power plant and the distribution system.
- Fire could impact the generation and/or distribution of power at the Gameti power plant and also impact transportation to and from site.
- The lead agency for response to forest fires in the NWT is the Government of the Northwest Territories Department of Environment and Natural Resources, Fire Operations Division.
- In the event of a forest fire that threatens the Community of Gameti the lead agency will be the Territorial Emergency Response Committee (TERC).
- If workers are exposed to high levels of smoke, workers shall use appropriate respiratory protection as per *SWP: 4.09: Respiratory Protective Equipment*.
- If possible move fuel sources away from the plants.
- If possible move electrical equipment to metal storage containers (e.g., sea-cans, open-top drums, etc.).
- In forest fire situations that threaten communities, unless directed by TERC, NTPC shall keep generation and distribution systems energized for as long as possible. This will aid emergency services in their actions, communications and resources. The local power plant shall remain operational and manned until TERC authorizes the shutdown.
- TERC makes the recommendation as to whether evacuation of NTPC staff from the plant site is required. Evacuation will be coordinated by TERC.
- NTPC shall monitor conditions to ensure employees are not exposed to unreasonable risks while maintaining operations.
- Immediately report any damages or personal injury to the responsible Manager.
- If evacuation of the site is necessary all fuel valves shall be closed and the plant shut down.

## 11 Earthquake

### 11.1 Workers inside a Building

- Duck under the nearest sturdy object and hold onto it until the shaking stops. If you are not near a sturdy object, make yourself as small as possible and cover your head and neck.
- If you stand in a doorway, brace yourself against the frame and watch out for a swinging door or other people.
- Avoid windows, filing cabinets, bookcases and other heavy objects that could fall or shatter.
- Stay under cover until the shaking stops and leave the building once safe to do so.

### 11.2 Workers outside a Building

- Move away from trees, signs, buildings, electrical poles and wires.
- Protect your head with your arms from falling debris.
- Move away from fire and smoke.
- Proceed to the Muster Point if safe, or proceed to a pre-designated alternate assembly area.

## 12 Severe Storms

- Heavy rainfall or snowfall, high winds, and/or heavy icing conditions can result in injury hazards, building and equipment damage, major power outages, communications failures, and road washouts.
- If severe weather conditions are forecasted or experienced, local staff shall:
  - Keep abreast of forecasts and storm developments;
  - Report conditions to the responsible Manager.
  - Do not undertake work or travel if conditions are too hazardous; and
  - Immediately report any storm damage or personal injury to the responsible Manager.

## 13 Floods

- Flood conditions can result in injury hazards, building and equipment damage, power outages, communications failures, and road washouts.
- If flooding is forecasted or experienced, local staff shall:
  - Report conditions to the responsible Manager.
  - Close valves to the main fuel tanks. Leave day tank valve open for use.
  - Move, seal and/or secure hazardous materials to prevent spills.
  - Move electrical equipment (e.g., breakers) off the floor to prevent damage;
  - Do not undertake work or travel if conditions are too hazardous;
  - Maintain communication with emergency services.

- In the event that flooding threatens the Community of Gameti the lead agency will be the Territorial Emergency Response Committee (TERC).
- Unless directed by TERC, NTPC shall keep generation and distribution systems energized for as long as possible. This will aid emergency services in their actions, communications and resources. The local power plant shall remain operational and manned until TERC authorizes the shutdown.
- TERC makes the recommendation as to whether evacuation of NTPC staff from the plant site is required. Evacuation will be coordinated by TERC.
- NTPC shall monitor conditions to ensure employees are not exposed to unreasonable risks while maintaining operations.
- Immediately report any damages or personal injury to the responsible Manager.
- If evacuation of the site is necessary all fuel valves shall be closed and the plant shut down.

## **14 Bomb Threats and Suspicious Parcels**

### **14.1 Person Receiving a Bomb Threat by Phone**

- If a telephone bomb threat is received, the person receiving the call should:
  - Keep the caller on line as long as possible in order to gather as much information as possible. Ask caller to repeat message. Try to record every word spoken by caller.
  - If caller does not indicate the location of the bomb or time of detonation, ask caller for this information.
  - Listen closely to voice: sex, voice quality, accent, or speech impediment.
  - Pay particular attention to background noises such as motors running or music that could give a clue to location from which the call is made.
  - Notify the Plant Superintendent/Operator, who shall then notify:
    - RCMP
    - Manager
    - HSE Director
- Evacuate the building, under supervision of the responsible Manager, as soon as possible. If necessary and under the discretion of the responsible Manager, pull the fire alarm to ensure all employees evacuate the building as soon as possible.

### **14.2 Characteristics of Suspicious Packages and Envelopes**

- Look for inappropriate or unusual labeling characteristics, which may include:
  - Excessive postage
  - Strange return address or no return address
  - Incorrect titles or title without a name
  - Not addressed to a specific person
  - Marked with restrictions such as "Personal," "Confidential," or "Do not x-ray"
  - Marked with any threatening language

- Postmarked from a city or other location that does not match the return address.
- Look for unusual pack appearance characteristics, which may include:
  - Powdery substance felt through or appearing on the package or envelope
  - Oily stains, discolorations, or odor
  - Lopsided or uneven envelope
  - Excessive packaging material such as masking tape, string, etc.
- Look for other suspicious signs, which may include:
  - Excessive weight
  - Strange noises
  - Protruding wires or aluminum foil

#### **14.3 Person Finding a Suspicious Parcel**

- Under no circumstances will any employee attempt to touch, move or dispose of a suspicious object on NTPC premises.
- Do not shake or empty the contents of any suspicious package or envelope.
- Do not carry the package or envelope, show it to others or allow others to examine it.
- Put the package or envelope down on a stable surface; do not sniff, touch, taste, or look closely at it or at any contents which may have spilled.
- Alert others in the area about the suspicious package or envelope. Leave the area, close any doors, and take actions to prevent others from entering the area. If possible, shut off the ventilation system.
- Wash hands with soap and water to prevent spreading potentially infectious material to face or skin. Seek additional instructions for exposed or potentially exposed persons.
- Notify your Manager and await instructions. If told to evacuate, follow specific instructions, as the usual evacuation procedures may not apply.

## **15 Powerline Down Where Accessible**

At NTPC the safety of employees, contractors, and the public is of paramount importance. All fallen powerlines shall be treated as live and therefore dangerous.


Where an NTPC powerline is down and accessible to the public NTPC shall affect an immediate and unhindered response in accordance with the following directives:

**1. DO NOT GO WITHIN 10 METERS OF THE DOWNED POWERLINE**

**2. ATTENDANT:**

- a. Contact the RCMP, fire department, or another NTPC employee to provide/act as the attendant.
- b. Post an attendant at the site. The attendant shall ensure no people enter the secure area except qualified NTPC personnel.

- c. Barricades and/or caution tape may be used in addition to the attendant to keep people away from the hazard.
  - d. The attendant shall make every reasonable effort to remain in place until the hazard is controlled.
3. **SWITCHING:**
  - a. Qualified Workers will perform the necessary switching to de-energize the line as per NTPC Work Protection Code.
4. **NOTIFICATION:**
  - a. Notify the Generation Support Manager of the incident.
  - b. The Generation Support Manager shall notify the Transmission and Distribution Division who shall send Workers to repair the line.
5. **RETURN TO SERVICE**
  - a. Once the line is repaired a qualified Worker will re-energize the line.

 <b>NORTHWEST TERRITORIES POWER CORPORATION</b> Empowering Communities	<b>Health &amp; Safety Management System Form:</b> Gameti Emergency Response Plan	Page 20 of 20
	<b>Monitor:</b> Director, Health, Safety & Environment	Form #: 11.2

Development		
Name	Position	Date
Prepared by: J. Clark	Environmental Analyst	Jan. 25, 2017
Reviewed by: R. Sunderland	Plant Manager, Operations	Feb. 01, 2017
Approved by: E. Smith	Director, Health, Safety & Environment	Feb. 03, 2017

Revision History					
#	Revised Sections	Description of Revisions	Revised by (name, position)	Approved by (name, position)	Issue Date
01	2.2, 3, 6.1, 9.3	Update to declaration guidelines, communication and site/area warden	J. Clark, Env. Analyst	E. Smith, Director HSE	4/25/18
02	2.2, 3	Included 9-1-1, removed section 3 Emergency Declaration.	T. Perkins, Env, Analyst	J. Clark, Senior HSE Policy Coordinator	04/24/20
03	6.3, 7	Updated to latest Red Cross Standards, Updated figures 1 and 2.	T. Perkins, Env. Analyst	E. Smith, Director HSE	03/01/21
04	-	Review all	T. Perkins, Env. Analyst	D. Dewar, Director HSE	02/02/22
05					
06					
07					