
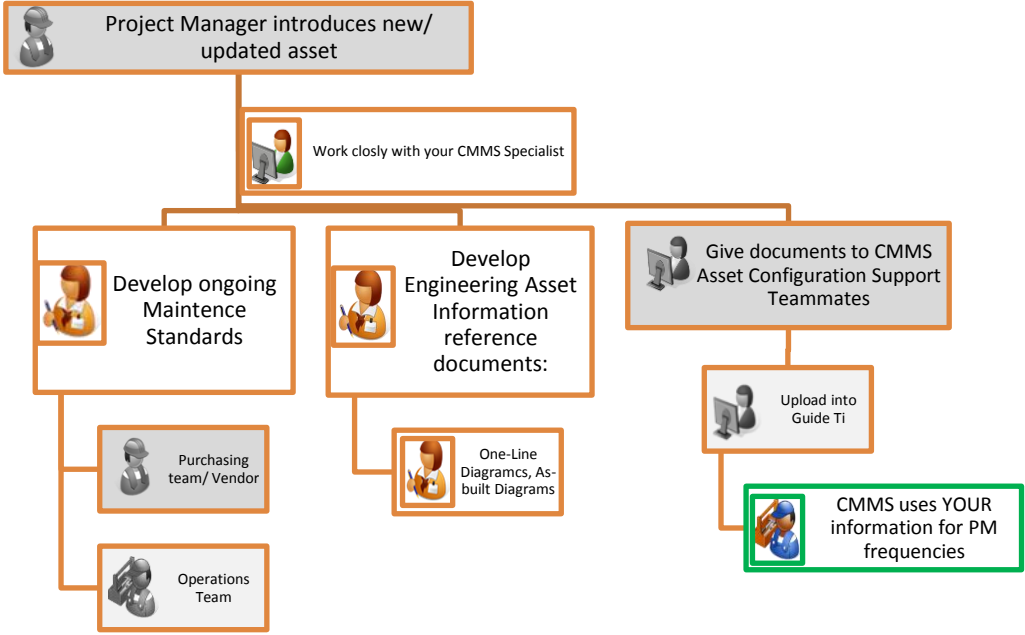


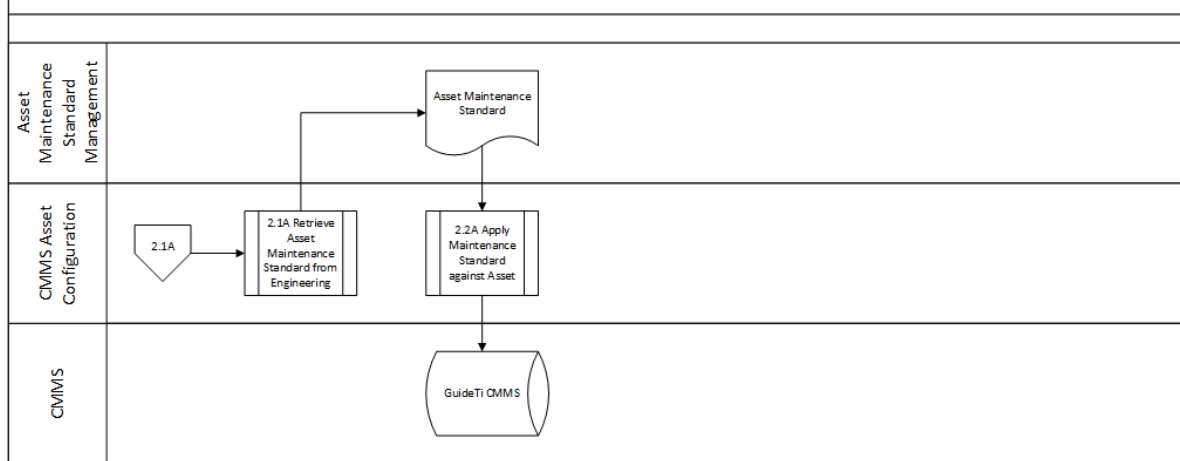
CMMS ACTIVITIES		<b>ASSET MAINTENANCE STANDARDS</b>		
WHEN? DURING:	<b>COMMISSIONING NEW/UPDATED ASSETS</b>			
WHO? NTPC POSITIONS:	<b>ENGINEERING TEAMS</b>			
YOUR GUIDE TI PROFILE	<b>“VIEWER”</b>			
WHAT YOU CAN DO IN GUIDE-TI?	<ul style="list-style-type: none"> <li>View-only access to asset tree, asset list, technical datasheet information etc. that has been populated for assets</li> <li>View-only access to outstanding work orders &amp; completed corrective work orders</li> <li>View-only access to upcoming /triggered/ completed preventives list</li> <li>Can initiate new work orders (corrective only) through web interface</li> </ul>			
YOUR SUPPORT TEAM	<b>HYDRO DIVISION</b>	<b>THERMAL DIVISION</b>	<b>T&amp;D DIVISION</b>	
	ASSET MANAGERS: <b>JEREMY STORVOLD</b>	ASSET MANAGER: <b>DEAN HENDRICKSON</b>	ASSET MANAGER: <b>DIPANKAR CHAKRABARTI</b>	
	PROJECT MANAGERS: <b>VARIES BY PROJECT</b>			
	CMMS ASSET CONFIGURATION: <b>STUART ROBINSON, MORRIS CALLAHAN, EILEEN HENDRY, KEN BELL</b> OPERATIONS MGT: <b>MIKE OCKO, JAY PICKETT, DAVE DUNCAN</b>			
HOW?  YOUR DUTIES	<b>CMMS SPECIALIST: CHRIS CHATWOOD</b>			
	<b>SYSTEM ADMINISTRATORS: HELP DESK (BLAINE MCKAY), EILEEN HENDRY</b>			
 <pre> graph TD     A[Project Manager introduces new/updated asset] --&gt; B[Work closely with your CMMS Specialist]     B --&gt; C[Develop ongoing Maintenance Standards]     B --&gt; D[Develop Engineering Asset Information reference documents]     B --&gt; E[Give documents to CMMS Asset Configuration Support Teammates]     C --&gt; C1[Purchasing team/ Vendor]     C --&gt; C2[Operations Team]     D --&gt; D1[One-Line Diagrams, As-built Diagrams]     E --&gt; F[Upload into Guide TI]     F --&gt; G[CMMS uses YOUR information for PM frequencies]     </pre>				

**MORE INFORMATION AVAILABLE ON **POWER BOX****  
**COMMENTS? EMAIL: [CMMS@NTPC.COM](mailto:CMMS@NTPC.COM)**

# CMMS PROCESS DETAILS

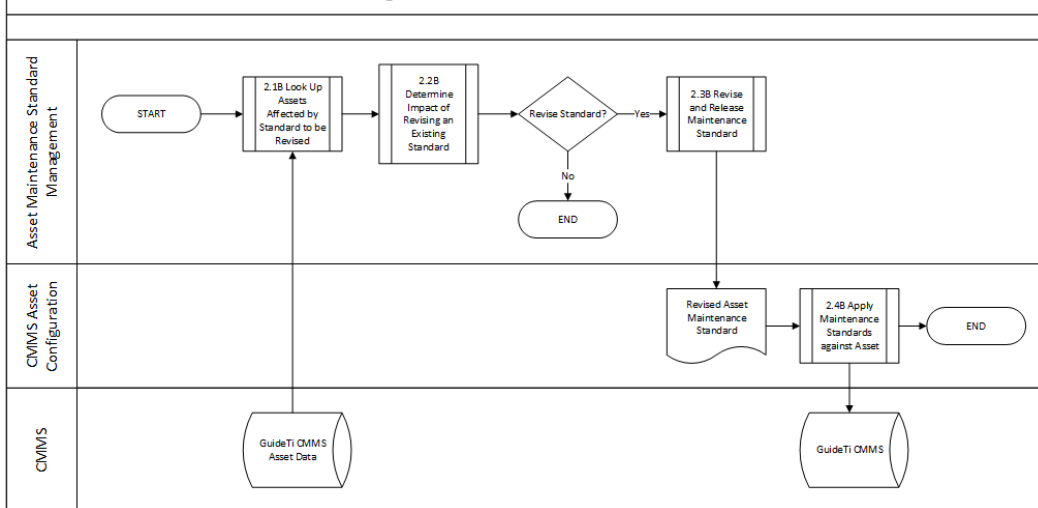
Process	Process Description	Process Narrative
2.0A	Set Up Maintenance Procedures Against Assets	Proper maintenance standards need to be applied against the assets in the CMMS in order for the CMMS to generate work requirements. Maintenance standards include time based and meter based activities which may include inspections and/or other PM procedures.
2.1A	Retrieve Asset Maintenance Standard from Engineering	Engineering is the purveyor of maintenance standards and makes the final decision on asset mtc requirements based on multiple factors including OEM recommended maintenance procedures, operational conditions and availability of mtc budgets. Mtc standards may include work procedures, estimated hourly efforts, standard materials, tools and mobilization requirements.
2.2A	Apply Maintenance Standard against Asset	One or more maintenance standards could be applied to an asset. These are entered into the CMMS as standard work procedures and linked to the appropriate assets.

## 2.0A Set Up Maintenance Procedures Against Assets



Process	Process Description	Process Narrative
2.0B	Maintain Maintenance Procedures Against Assets	As maintenance procedures or standards are revised, these need to be changed in the CMMS to reflect the latest procedures or standards. The existing procedures or standards are revised and the new requirements are applied against the assets to which they impact.

## 2.0B Maintain Maintenance Procedures Against Assets



MORE INFORMATION AVAILABLE ON **POWER BOX**

COMMENTS? EMAIL: [CMMS@NTPC.COM](mailto:CMMS@NTPC.COM)