

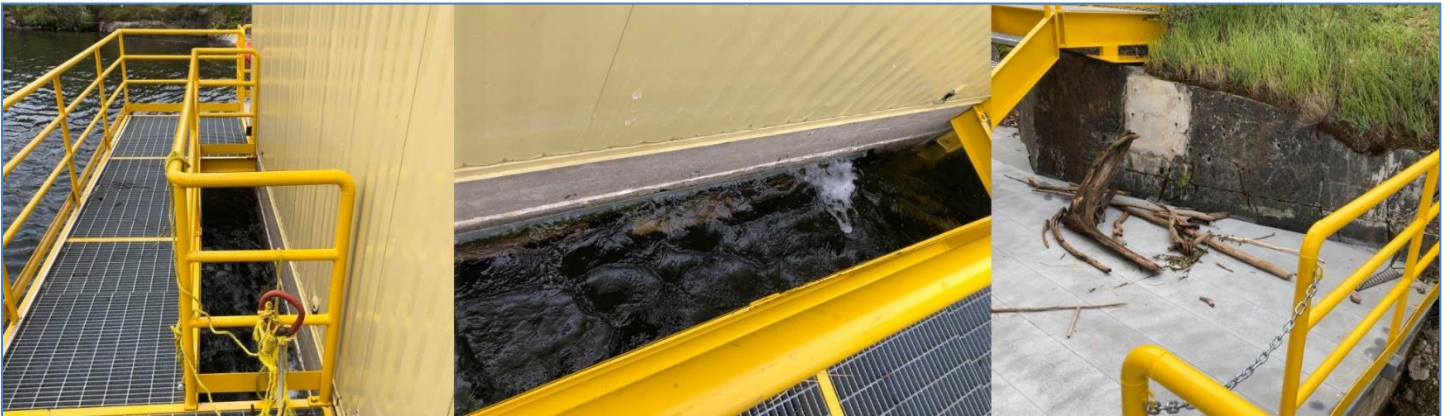
Bluefish Headgate Maintenance Standard Operating Procedure

The build up of debris at the Bluefish headgate can result in blockage of the intake trash racks. When the trash racks are blocked the velocities in the water upstream of the intake increase and can result in the impingement of fish against the trash rack and death of fish. To ensure the trash racks and intake remain free of debris and avoid impingement and death of fish NTPC will:

1. Inspect the intake trash racks weekly during open water season and remove debris

- Inspection of the intake trash racks will be included in Operator's weekly sitewide inspection
 - Inspections are submitted through the internal CMMS system
 - If debris is present it will be removed in a safe manner
 - Photos of the trash rack and any debris will be sent to aupton@ntpc.com

Photos of the trash racks and debris removed from the intake



2. Complete annual underwater inspection of intake trash racks to verify they are not blocked by debris

- An underwater inspection will be completed annually to determine the amount of debris built up on the intake
 - Inspection will be completed using remote operated underwater drone or with a remote camera attached to a pole when shutdown is not possible

3. If required Bluefish G1 and G2 Units will be shutdown and intake will be cleaned of debris

- If only a minor or moderate amount of debris is present the intake can be cleaned from the platform and/or a boat as debris will float to the surface once the units are shutdown
- If a large amount of debris is present a dive team will be used to clean the debris from the intake once the units are shutdown