

NTPC Health & Safety Alert

Power Lines Down



Background

Power lines on the ground or low to the ground present a real danger to the public. Therefore every report of a Wire Down must be treated with extreme urgency.

Dispatching qualified personnel, alerting local authorities (RCMP), and calling Central Control Room to declare an emergency are steps to be taken immediately.

Practical Guidance

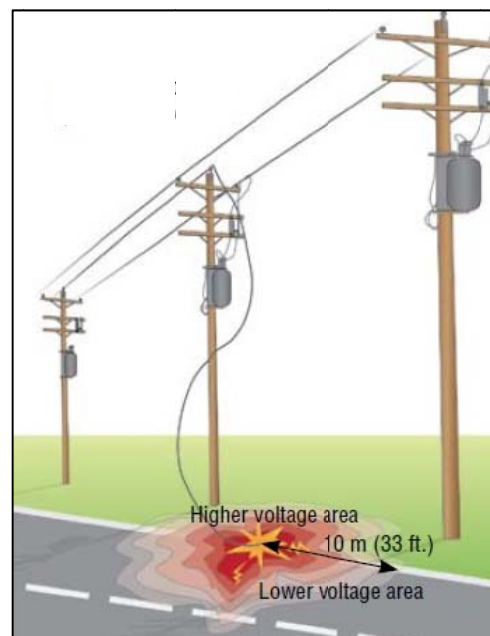
This Alert is directed to all NTPC employees.

Non-operations Employees:

- Call CCR (867-669-3370) to report a downed power line.
- If on site and trained stand guard until RCMP or NTPC personnel arrive.

Operations Employees:

- Dispatch qualified personnel to make the area safe, Call CCR (867-669-3370), and follow Level One Emergency procedures.



For more information contact your Health & Safety Department.