

NTPC Health & Safety Alert

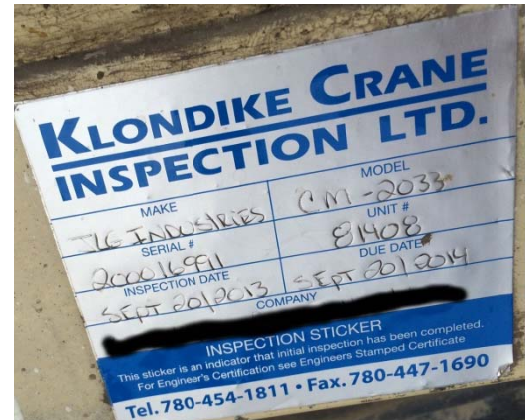
Unsafe Rental Equipment



Background

An NTPC work crew recently rented a scissor lift from a local vendor. On closer examination it was found that the scissor lift had not been inspected for three years and that the controls were completely unreadable.

The scissor lift was returned to the vendor and the work was postponed until safe equipment could be found.



Practical Guidance

Equipment that lifts or carries personnel must be inspected annually and must have routine maintenance. Verify this by checking for an inspection sticker on the outside of the unit (see pic above) or by asking the vendor for the inspection certificate. If you can't find a sticker, it likely hasn't been inspected.

All equipment must have readable controls. This unit had been used for painting jobs. The buttons, switches, emergency stop, and joystick controls were all unreadable as to what their functions were. Someone had even written in some directions in marker. In this case the vendor simply needs to order new decals to replace the obscured ones, and to have the scissor lift inspected for safety and functionality.



For more information please contact your Health & Safety Department.